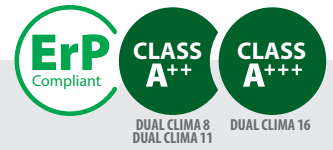


## AIR SOURCE HEAT PUMPS

### DUAL CLIMA

COMPACT MONOBLOC HEAT PUMP  
COMPLETE INSTALLATION SOLUTION PACK (HEATING, COOLING AND DHW)  
FULLY RATED HEATING CAPACITY GUARANTEED TO -20°C  
CAN BE COMBINED WITH OTHER ENERGIES (SOLAR, GAS, OIL)  
SIZES: 8, 11 and 16 kW



The most advanced technology  
at the most reasonable price

# DUAL CLIMA

DOMUSA TEKNİK introduces in the heating and air conditioning market the **DUAL CLIMA** air source heat pump range and a complete package of solutions to optimize the energy use of the units, the storage and distribution of domestic hot water. With an excellent seasonal efficiency (**A++ and A+++ rating**), and ease of installation and use, the **DUAL CLIMA** range is an ideal alternative for those who choose a renewable energy source for heating and cooling their homes.

**DOMUSA**  
TEKNİK



# Savings of up to 70% of total consumption in your energy bill



## SAVINGS

Air source **reduces the total energy consumption of the home by up to 70%**, thanks to the use of free air energy.

This saving in consumption is maintained even when temperatures are below 0°C.



## MULTIPURPOSE

Central heating, hot water and cooling functions are available.



## ENVIRONMENTALLY FRIENDLY

Air source is a **clean technology that respects the environment**. It does not emit combustion gases since it does not need to burn anything to bring heat to the heating installation or domestic hot water.



## SAFETY

It is a **much safer system and requires less maintenance** than those that need to exchange cooling gas inside the house.



DUAL CLIMA 16



### OPERATION

The heat obtained is exchanged in the condenser, transferring it to the heat-transferring fluid, which is responsible for supplying and/or domestic hot water.



### WIDE RANGE OF PACKS

DOMUSA TEKNIK offers a wide range of packs that are completed with all types of buffer tanks and DHW tanks.

These tanks are made of stainless steel and have a 10 years commercial corrosion warranty.

The design of the tanks is for specific use with a heat pump, with a large heat exchange surface, and with the possibility of being installed with boilers that use other types of fuels.

The installation solutions offered with the DUAL CLIMA air source heat pump are designed to achieve efficient, durable and reliable installations.



### EFFICIENCY

DUAL CLIMA air source heat pumps are equipped with a DC Inverter compressor which is quiet, robust, high efficiency compressor that can modulate the thermal power according to the needs of the house.

Due to the power setting, the on / off cycles are reduced, ensuring greater reliability of the system. As a result, unnecessary consumption is reduced and user comfort is improved.

The DUAL CLIMA range has a system that reduces losses caused by the accumulation of ice in the evaporator. Before the cooling liquid passes through the distributor, it flows through the bottom of the evaporator preventing ice from forming in this area.

**DUAL CLIMA's energy certification is considered as one of the best in its category**

DUAL CLIMA 8  
DUAL CLIMA 11



DUAL CLIMA 16



DUAL CLIMA 11

# Comfort at your fingertips

Configure the installation that suits your needs.





## EASE OF USE

### Reduced maintenance

MONOBLOC technology, in which the entire gas circuit is integrated into the outdoor unit, reduces the risk of cooling gas leaks, thus avoiding gas recharge operations.

In addition, by using electricity as a power source, the maintenance required in the combustion of fossil fuels is avoided, both in the combustion chamber and in the exhaust gas outlet.

### Electronic control inside the home

The control board of the DUAL CLIMA air source heat pump is installed inside the home, from which you have complete control of all the components of the system, with an easy and intuitive use.

### Quiet night operation mode

Night operation mode reduces fan noise levels during the night hours programmed in the system.

## A control board for an easy and intuitive use.

---



## MONOBLOC SYSTEM

### With MONOBLOC technology only hydraulic connections are made, which simplifies the installation

The gas/water exchanger is incorporated in the outdoor unit, thus avoiding the necessity to manipulate the cooling circuit in the installation process. The connection between the outdoor and indoor units is hydraulic, making the installation simpler and allowing a greater distance between the than if cooling gas was used as a heat-transferring fluid.



## EASE OF INSTALLATION

### 60° C flow temperature

The high flow temperatures, allows the use of the DUAL CLIMA heat pump even with radiators.

### Protection against hydraulic component frost

The electronic control of the heat pump activates the circulation pump and the compressor if necessary, in order to prevent the water from falling below freezing point.

To avoid freezing against prolonged power cuts, two solutions are offered:

- Anti frost valve that drains the water circuit in the event that water temperatures drop to freezing point.
- Corrosion Inhibitor/Anti-freeze is added to the system.

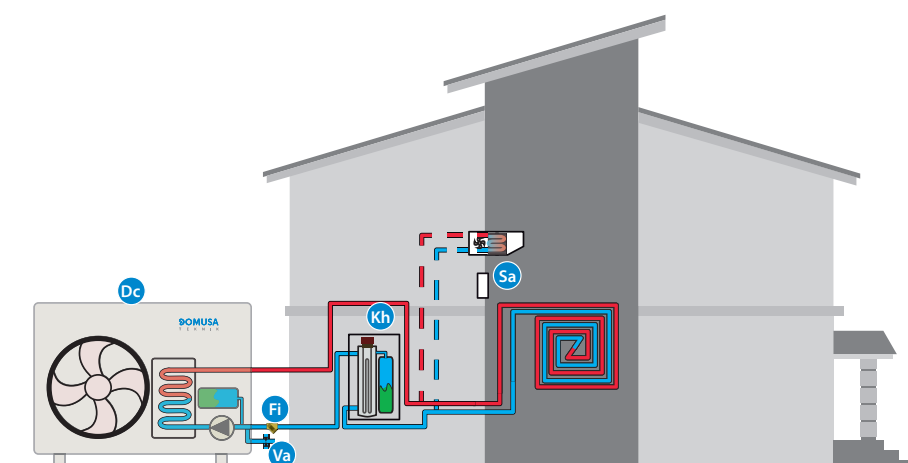
# Plug and play solutions

DOMUSA TEKNIK offers a wide range of packs that allow the configuration of any kind of heating, DHW or cooling installation.

Among this range of packs, you can find simple solutions such as electrical back-up kits, or more complete solutions including buffer tanks with circuit separation which allows the combination of heat pumps with back-up boilers.

## PACK 1 DUAL CLIMA

**Air source heat pump for heating with electrical back-up.**



Basic scheme. It does not include filters, automatic air vents, expansion vessels, shut-off valves, check or safety valves present in any installation.

Dc	DUAL CLIMA heat pump	Included
Kh	Back-up hydraulic kit	Included
Fi	1" Water filter	Included
Sa	Room sensor	Included
Va	Frost protection valve	Optional

### COMPONENTS



Monobloc air source



Hydraulic kit



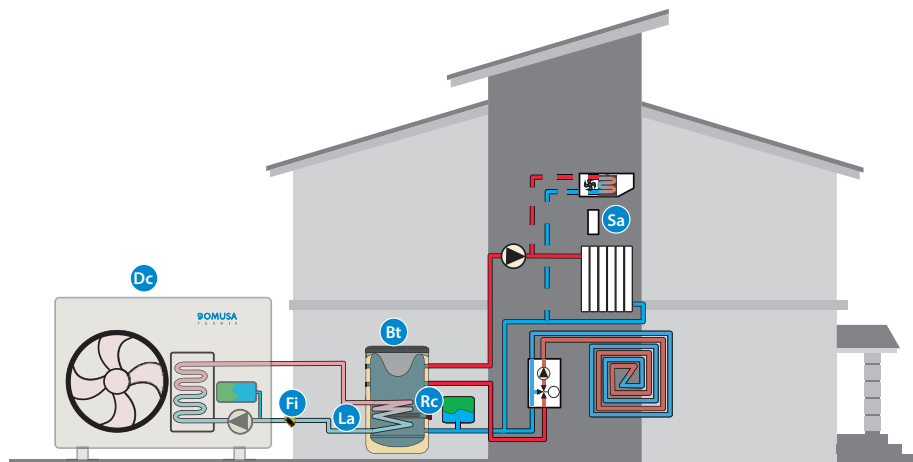
Room sensor

MODEL	COMPOSITION		
PACK 1 DUAL CLIMA 8			
PACK 1 DUAL CLIMA 11	Back-up hydraulic kit	1" Water filter	Room sensor
PACK 1 DUAL CLIMA 16			



### PACK 2 DUAL CLIMA

Heating and cooling with an air source heat pump and a separator and circuit balancing buffer tank, allows the installation with a back-up boiler for heating.



Basic scheme. It does not include filters, automatic air vents, expansion vessels, shut-off valves, check or safety valves present in any installation.

MODEL	COMPOSITION			
PACK 2 DUAL CLIMA 8	BTS 100	Antifreeze liquid	1" Water filter	Room sensor
PACK 2 DUAL CLIMA 11				
PACK 2 DUAL CLIMA 16	BTS 150			

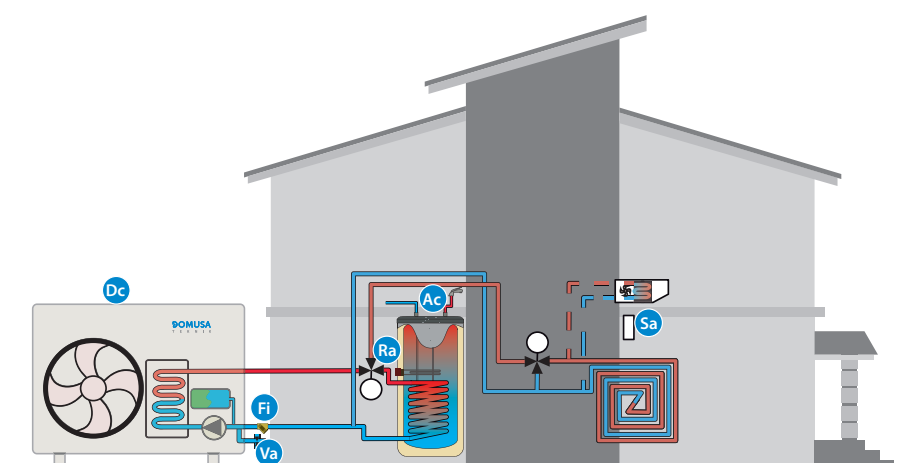
Dc	DUAL CLIMA heat pump	Included
Bt	BTS tank	Included
La	Antifreeze liquid	Included
Fi	1" Water filter	Included
Sa	Room sensor	Included
Rc	Electric Heating element	Optional

#### COMPONENTS



### PACK 3 DUAL CLIMA

Heating, DHW and cooling with an air source heat pump.



Basic scheme. It does not include filters, automatic air vents, expansion vessels, shut-off valves, check or safety valves present in any installation.

MODEL	COMPOSITION			
PACK 3 DUAL CLIMA 8/150	SANIT HE 150	1" Water filter	Room sensor	
PACK 3 DUAL CLIMA 8/200	SANIT HE 200			
PACK 3 DUAL CLIMA 11/200	SANIT HE 200			
PACK 3 DUAL CLIMA 16/200	SANIT HE 200			
PACK 3 DUAL CLIMA 16/300	SANIT HE 300			

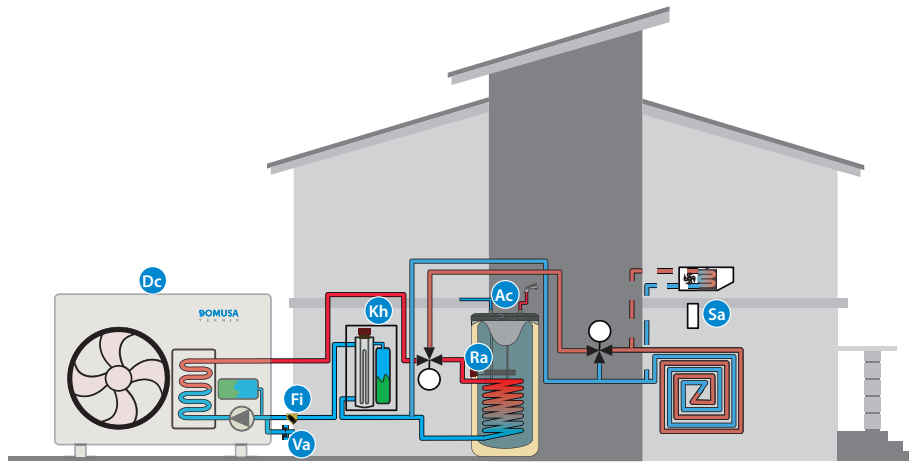
Dc	DUAL CLIMA heat pump	Included
Ac	SANIT HE DHW tank	Included
Sa	Room sensor	Included
Fi	1" Water filter	Included
Ra	Electric heating element for DHW tank	Optional
Va	Frost protection valve	Optional

#### COMPONENTS



## PACK 4 DUAL CLIMA

Heating, cooling and DHW with an air source heat pump with electric back-up.



Dc	DUAL CLIMA heat pump	Included
Ac	Sanit HE DHW tank	Included
Sa	Room sensor	Included
Kh	HP Hydraulic kit	Included
Fi	1" Water filter	Included
Va	Frost protection valve	Optional
Ra	Electric heating element for DHW tank	Optional

### COMPONENTS



Monobloc air source



Hydraulic kit



SANIT HE



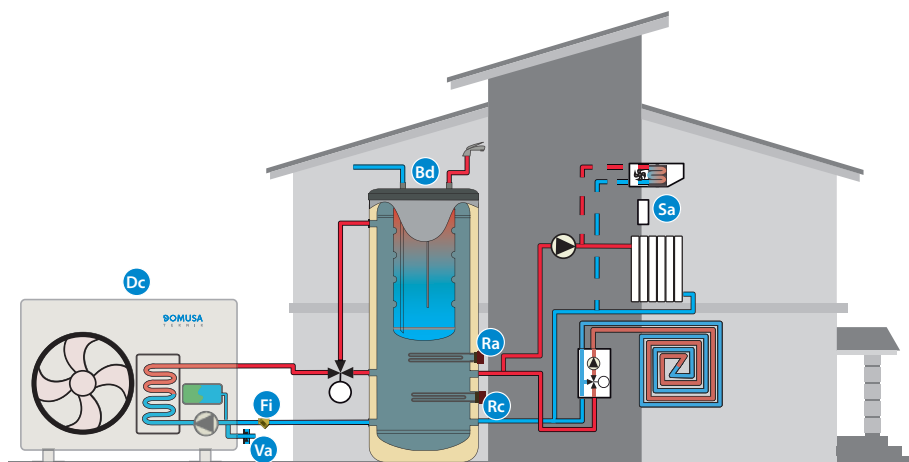
Modulating room sensor

Basic scheme. It does not include filters, automatic air vents, expansion vessels, shut-off valves, check or safety valves present in any installation.

MODEL	COMPOSITION			
PACK 4 DUAL CLIMA 8/150	SANIT HE 150			
PACK 4 DUAL CLIMA 8/200	SANIT HE 200	1" Water filter	Modulating room sensor	HP Hydraulic kit
PACK 4 DUAL CLIMA 11/200				
PACK 4 DUAL CLIMA 16/200				
PACK 4 DUAL CLIMA 16/300	SANIT HE 300			

## PACK 5 DUAL CLIMA

Heating and DHW with an air source heat pump. It allows a combination of a back-up boiler.



Dc	DUAL CLIMA heat pump	Included
Bd	BT DUO HE buffer tank	Included
Fi	1" Water filter	Included
Sa	Room sensor	Included
Ra	Electric Heating element	Optional
Rc	Electric heating element for DHW tank	Optional
Va	Frost protection valve	Optional

### COMPONENTS



Monobloc air source



BT DUO HE



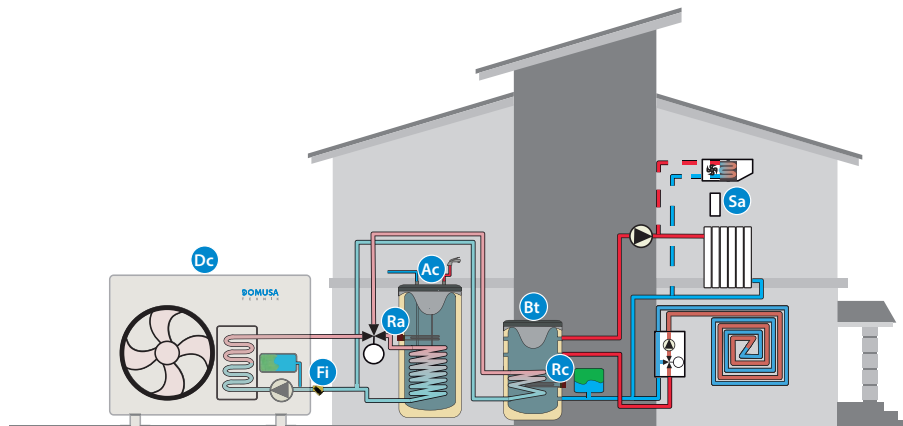
Modulating room sensor

Basic scheme. It does not include filters, automatic air vents, expansion vessels, shut-off valves, check or safety valves present in any installation.

MODEL	COMPOSITION		
PACK 5 DUAL CLIMA 8	BT DUO HE 180/60	1" Water filter	Modulating room sensor
PACK 5 DUAL CLIMA 11			
PACK 5 DUAL CLIMA 16			

### PACK 6 DUAL CLIMA

Heating, cooling and DHW with an air source heat pump, DHW tank and circuit balancing unit. Allows the use of a back-up boiler for heating.



Basic scheme. It does not include filters, automatic air vents, expansion vessels, shut-off valves, check or safety valves present in any installation.

MODEL	COMPOSITION				
PACK 6 DUAL CLIMA 8/100	BTS 100	Sanit HE 150	1" Water filter	Antifreeze liquid	Modulating room sensor
PACK 6 DUAL CLIMA 8/200	BTS 100	Sanit HE 200			
PACK 6 DUAL CLIMA 11/200	BTS 100				
PACK 6 DUAL CLIMA 16/200	BTS 150				
PACK 6 DUAL CLIMA 16/300	BTS 150	Sanit HE 300			

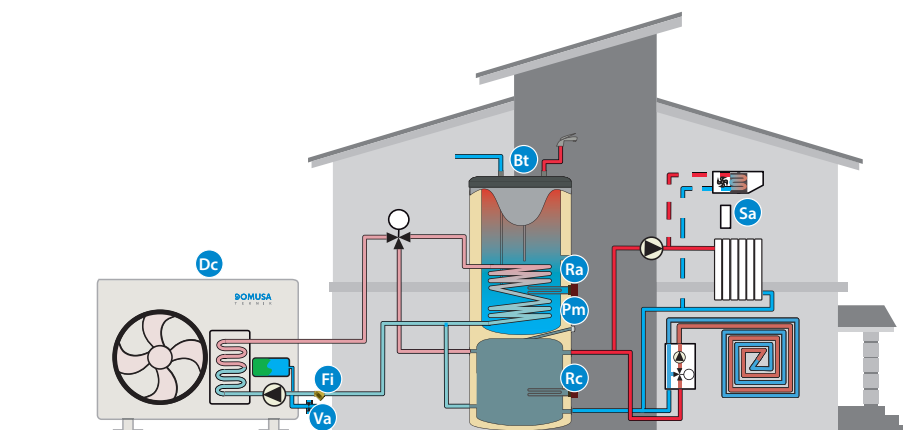
Dc	DUAL CLIMA heat pump	Included
Bt	BTS tank	Included
Ac	Sanit HE DHW tank	Included
La	Antifreeze liquid	Included
Fi	1" Water filter	Included
Sa	Room sensor	Included
Ra	Electric heating element for DMW tank	Optional
Rc	Electric heating element for heating	Optional

#### COMPONENTS



### PACK 7 DUAL CLIMA

Air source heat pump with a triple service tank: balances the installation, DHW and heating, DHW and cooling. Allows the use of a back-up boiler for heating.



Basic scheme. It does not include filters, automatic air vents, expansion vessels, shut-off valves, check or safety valves present in any installation.

MODEL	COMPOSITION		
PACK 7 DUAL CLIMA 8	BT TRIO 200/50	1" Water filter	Room sensor
PACK 7 DUAL CLIMA 11	BT TRIO 200/80		
PACK 7 DUAL CLIMA 16	BT TRIO 200/80		

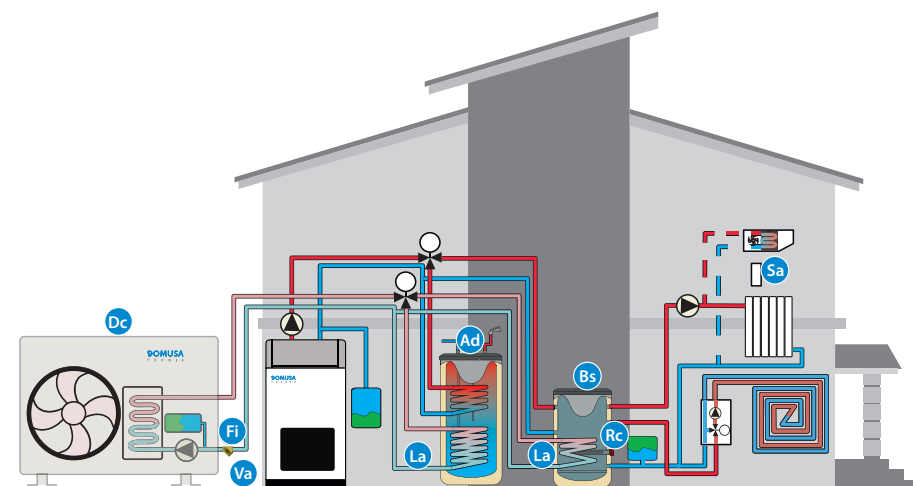
Dc	DUAL CLIMA heat pum	Included
Bt	BTS tank	Included
Pm	Manual air vent	Included
Fi	1" Water filter	Included
Sa	Room sensor	Included
Ra	Electric heating element for DMW tank	Optional
Rc	Electric heating element for heating	Optional
Va	Frost protection valve	Optional

#### COMPONENTS



### PACK 8 DUAL CLIMA

Heating, cooling and DHW with an Air source heat pump with balancing circuit separation buffer and double exchange DHW tank. Allows the use of a back-up boiler.



Basic scheme. It does not include filters, automatic air vents, expansion vessels, shut-off valves, check or safety valves present in any installation.

MODEL	COMPOSITION			
PACK 8 DUAL CLIMA 8/200		BTS 100		
PACK 8 DUAL CLIMA 11/200	SANIT HE 200 DS	BTS 150	1" Water filter	Room sensor
PACK 8 DUAL CLIMA 16/200				
PACK 8 DUAL CLIMA 16/300				

Dc	DUAL CLIMA heat pump	Included
Ad	SANIT HE DHW tank	Included
Bs	BTS tank	Included
Sa	Room sensor	Included
La	Antifreeze liquid	Included
Fi	1" Water filter	Included
Rc	Electric heating element for DHW tank	Optional

#### COMPONENTS



Monobloc air source



BTS tank



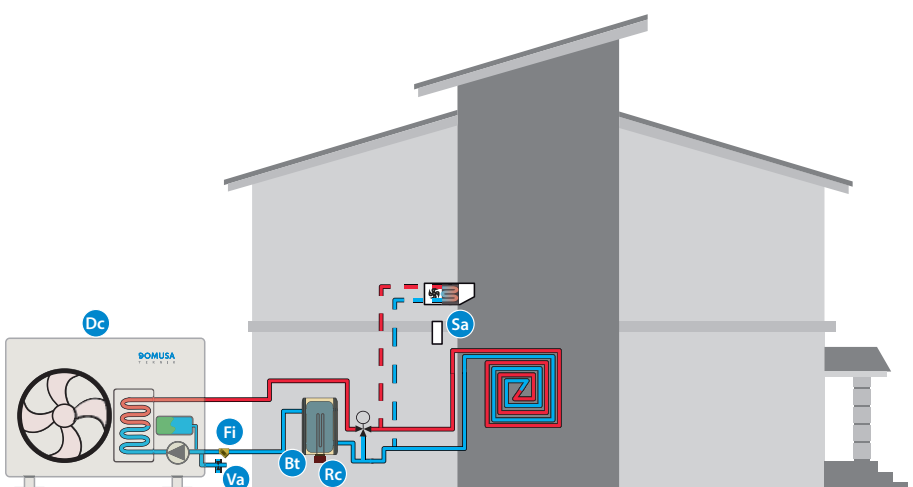
SANIT HE DS



Modulating room sensor

### PACK 9 DUAL CLIMA

Heating and cooling with an Air Source Heat Pump and buffer tank.



Basic scheme. It does not include filters, automatic air vents, expansion vessels, shut-off valves, check or safety valves present in any installation.

MODEL	COMPOSITION		
PACK 9 DUAL CLIMA 8	BT 50	1" water filter	Room sensor
PACK 9 DUAL CLIMA 11			
PACK 9 DUAL CLIMA 16			

Dc	DUAL CLIMA heat pump	Included
Bt	BT50 tank	Included
Fi	1" Water filter	Included
Sa	Room sensor	Included
Va	Frost protection valve	Optional
Rc	Electric heating element for DHW tank	Optional

#### COMPONENTS



Monobloc air source

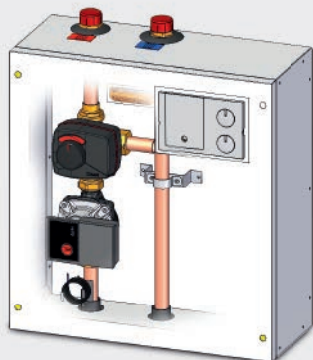


BT 50



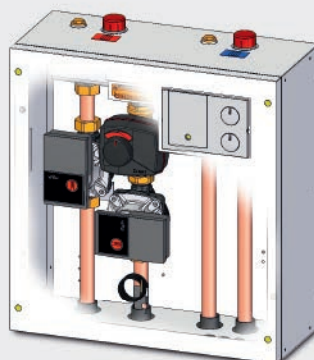
Room sensor

# Hydraulic accessories for heat pumps



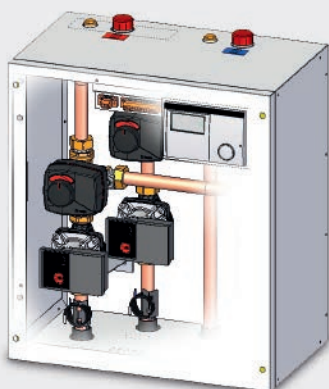
**Kit BT M**

- Mixed circuit
- Weather compensation system



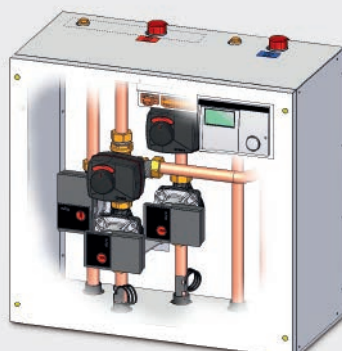
**Kit BT DM**

- Mixed circuit
- Direct circuit
- Weather compensation system



**Kit BT 2M**

- Mixed circuit
- Mixed circuit
- Weather compensation system



**Kit BT 2MS**

- Mixed circuit
- Direct circuit
- DHW
- Weather compensation system

## HYDRAULIC MODULE FOR HEAT PUMP

# HP HYDRAULIC KIT

INTEGRATED EXPANSION VESSEL

2,5 kW BACK UP ELECTRIC HEATING ELEMENT

### SPECIFICATIONS

MODEL	ELECTRIC HEATING ELEMENT POWER kW	DIMENSIONS mm		
		HEIGHT	WIDTH	DEPTH
HP HYDRAULIC KIT	2,5	710	365	230



BUFFER TANK

# BT 50

PRIMARY TANK  
FOR COOLING AND HEATING



CAPACITY: 50 L

SPECIFICATIONS

MODEL	DIMENSIONS mm		ENERGY EFFICIENCY CLASS
	HEIGHT	DIAMETER	
BT 50	586	530	C



BUFFER TANK WITH SEPARATOR

# BTS 100-150

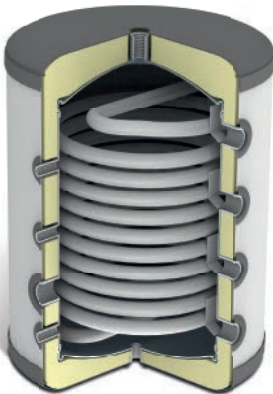
PRIMARY TANK  
FOR COOLING OR HEATING



CAPACITY: 100 AND 150 L

SPECIFICATIONS

MODEL	DIMENSIONS mm		ENERGY EFFICIENCY CLASS	EXCHANGE SURFACE m <sup>2</sup>
	HEIGHT	DIAMETER		
BTS 100	852	581	C	1.9
BTS 150	1,132	581		2.4



BUFFER TANK

# BT DUO HE

PRIMARY AND DHW ACCUMULATION  
FOR HEATING



CAPACITY: 180/60 L

SPECIFICATIONS

MODEL*	PRIMARY VOLUME L	DHW VOLUME L	APPLICATION	DIMENSIONS mm		ENERGY EFFICIENCY CLASS
				DIMENSIONS	HEIGHT	
BT DUO HE 180/60	60	180	Heating and DHW	581	1,740	C





BUFFER TANK WITH SEPARATOR

# BT TRIO

PRIMARY AND DHW ACCUMULATION

FOR COOLING OR HEATING WITH INOX DHW TANK

CAPACITIES: 200/50 - 200/80 L



SPECIFICATIONS

MODEL*	PRIMARY VOLUME L	DHW VOLUME L	APLICATION	DIMENSIONS mm		ENERGY EFFICIENCY CLASS	EXCHANGE SURFACE m <sup>2</sup>
				DIMENSIONS	HEIGHT		
BT TRIO 200/50	50	200	Heating, cooling and DHW	608	1,718	C	2.5
BT TRIO 200/80	80	200		608	1,790		2.5

DHW CYLINDORS FOR HEAT PUMPS

# SANIT HE

STAINLESS STEEL TANK

SIMPLE EXCHANGE

CAPACITIES: 150 - 200 - 300 L



SPECIFICATIONS

MODEL	VOLUME L	APLICATION	DIMENSIONS mm		ENERGY EFFICIENCY CLASS	EXCHANGE SURFACE m <sup>2</sup>
			DIMENSIONS	HEIGHT		
SANIT HE 150	150	ACS	581	1,227	B	2,25
SANIT HE 200	200		581	1,563	B	2.5
SANIT HE 300	300		581	1,790	C	3.1



# SANIT HE DS

STAINLESS STEEL TANK

DOBLE INTERCAMBIO

CAPACITIES: 200 - 300 L



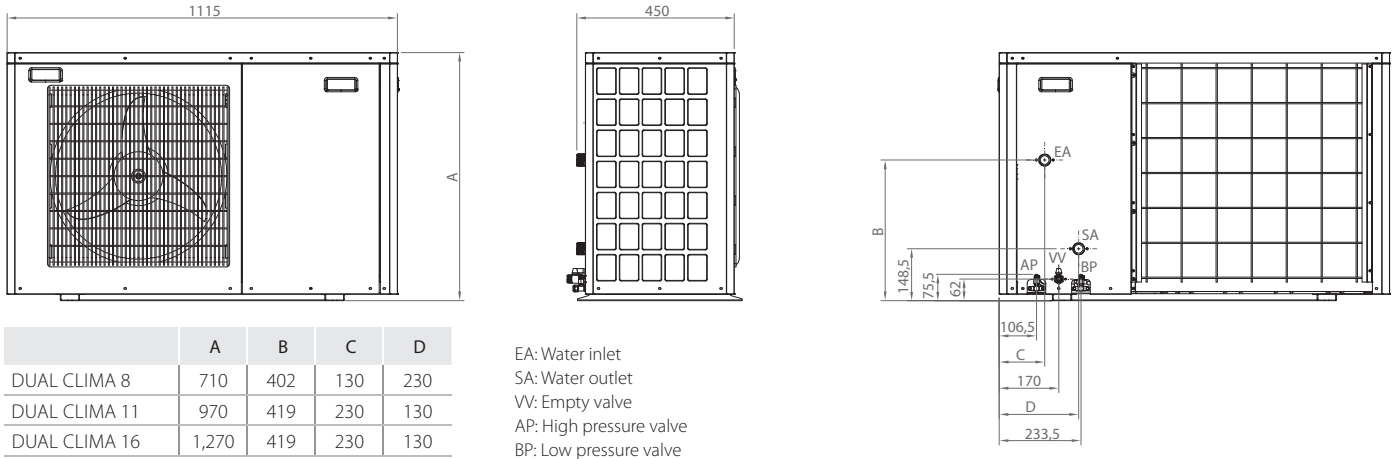
SPECIFICATIONS

MODEL	VOLUME L	APLICATION	DIMENSIONS mm		ENERGY EFFICIENCY CLASS	EXCHANGE SURFACE m <sup>2</sup>
			DIMENSIONS	HEIGHT		
SANIT HE 200 DS	200	DHW double exchange	581	1,563	B	2.5 + 0,6
SANIT HE 300 DS	300		608	1,790	C	3.1 + 0,6



# TECHNICAL CHARACTERISTICS

## DIMENSIONS



	A	B	C	D
DUAL CLIMA 8	710	402	130	230
DUAL CLIMA 11	970	419	230	130
DUAL CLIMA 16	1,270	419	230	130

MAIN CHARACTERISTICS		DUAL CLIMA 8	DUAL CLIMA 11	DUAL CLIMA 16
$\eta_{\text{Seasonal efficiency}}$	%	163	170	176
SCOP		4.16	4.32	4.48
SEER		4.10	3.40	3.90
COP (T. aire 7°C, T. agua 30/35-EN14511)		4.59	4.24	4.50
Energy efficiency class		<b>A++</b>		<b>A+++</b>
Heating output (Air T. 7°C, Water T. 30/35-EN14511)	kW	7.80	10.30	15.50
Cooling output (Air T. 7°C, Water T. 30/35-EN14511)	kW	8.40	9.45	15.70
Ingress protection		IPX 4		
Heat Pump Type		Air to Water, Inverter, Monobloc		
Use		Heating, Cooling and DHW		
Cooling		R410A		
Load	kg	2.30	3.30	3.90
Voltage	V	230V/50Hz		
Maximum absorbed cooling power	kW	1.70	2.50	3.44
Maximum absorbed heating power	kW	2.25	3.05	4.40
Noise level	db(A)	46	49	52
Max. flow temperature	°C	60		
Working temperature range	°C	-20/46		
Nominal working flow	m³/h	1.50	1.85	2.80
Weight	kg	90	125	150

## OPTIONS

- 1" water filter
- HP hydraulic kit
- 1,5 kW electric heating element
- 2,5 kW electric heating element
- 3,5 kW electric heating element
- Antifreeze liquid (5L)
- Room sensor
- Frost protection valve
- MYDOMO WiFi remote control



## EQUIPMENT

- DC Inverter air source heat pump
- High efficiency pump
- Heating circuit expansion vessel
- Control unit
- Flow limiter
- Water pressure gauge



# DOMUSA

T E K N I K

POSTAL ADDRESS  
 Apdo. 95  
 20730 AZPEITIA  
 (Gipuzkoa) España

HEADQUARTERS & FACTORY  
 Bº San Esteban, s/n.  
 20737 ERREZIL (Gipuzkoa) España  
 Tel.: +34 943 813 899

domusatechnik@domusatechnik.com  
 www.domusatechnik.com

WAREHOUSE  
 Atxubiaga, 13  
 Bº Landeta  
 20730 AZPEITIA  
 (Gipuzkoa) España

